



WELL-EQUIPPED  
ENGINEERING  
LABORATORIES



TAUGHT BY HIGHLY-QUALIFIED  
ACADEMICS AND EXPERIENCED  
PROFESSIONALS



INDUSTRY-RELEVANT  
MODULES

# ENGINEERING



UNIVERSITY PARTNERS



**MDIS**  
Management Development  
Institute of Singapore



Teesside  
University



University of  
Sunderland

## TEESSIDE UNIVERSITY, UNITED KINGDOM

Teesside University is a dynamic and modern institution, based in the north east of England, generating and applying knowledge that contributes to the economic, social and cultural success of students, partners and the communities we serve. We are an ambitious and enterprising university for a focused and pragmatic global new generation. We provide real opportunities and support to realise potential on a campus fit for the future and around the world. From developing an innovative and informed curriculum, tailored to industry, to addressing societal challenges on a global scale through inter-disciplinary research, the University's work is always relevant and purpose driven. Through education enriched by research, innovation and engagement with business and the professions, we transform lives and economies.





## UNIVERSITY OF SUNDERLAND, UNITED KINGDOM

The University of Sunderland is an innovative, forward-thinking university with high standards of teaching, research and support that sits at the heart of one of the UK's most up-and-coming cities. We have strong industry links and work closely with some of the world's leading companies.

Our Faculty of Business and Tourism is recognised worldwide; with students from over 70 countries and a presence on four continents, we are playing a major role in preparing tomorrow's leaders for long and successful careers.

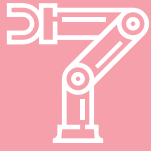
Our programmes are highly regarded in terms of student experience, teaching standards and relevance to the real world.

We believe that employability is at the heart of the university experience and this is underpinned by the drive to develop six key attributes in our graduates: capability, an enquiring mind, creativity, enterprise as well as an ethical and global outlook.

Whatever your future ambitions, make a life-changing decision by choosing to study at the University of Sunderland.



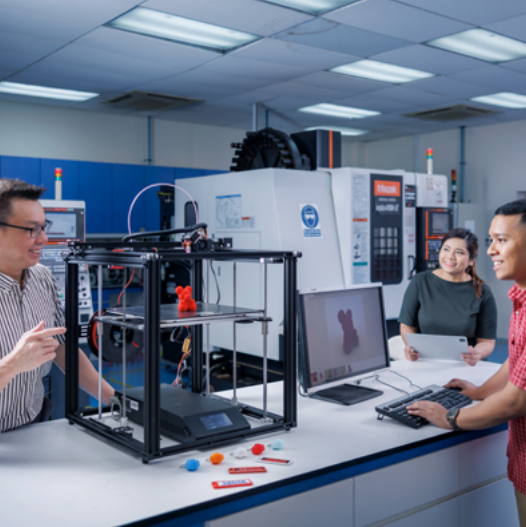
**University of  
Sunderland**



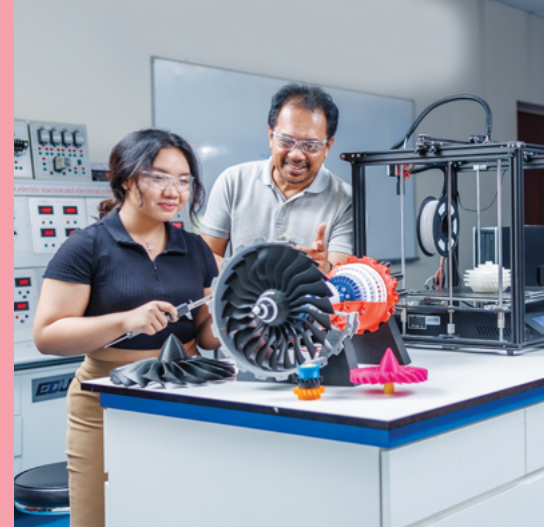
**WELL-EQUIPPED**  
ENGINEERING LABORATORIES



**INDUSTRY-RELEVANT**  
MODULES



**TAUGHT BY**  
HIGHLY-QUALIFIED ACADEMICS  
AND EXPERIENCED  
PROFESSIONALS



## PURSUE YOUR ENGINEERING COURSE WITH MDIS

Engineering is a dynamic field offering a plethora of opportunities to innovate and solve real-world problems. At MDIS, our specialisations in mechanical, electrical and electronics engineering provide you with a wide range of knowledge and skills in areas such as structural design, fluid mechanics, material science, circuit analysis, programmable logic controllers (PLCs) and power systems.

Our engineering programmes offer the flexibility of full-time and part-time engineering degree options to fit your schedule.

At MDIS, we stand committed to offering a holistic education that prepares you for industry challenges. Our mechanical, electronics and electrical engineering classes are equipped with lab facilities like 3D printers, CNC machines and advanced software like SolidWorks, Ansys and MATLAB. We ensure that you have the necessary tools to excel. Our team of lecturers with rich industry and research backgrounds, provide essential mentorship throughout your bachelor of engineering or even your master's degree in engineering.



**MDIS**  
Management Development  
Institute of Singapore

# ENGINEERING COURSES EDUCATIONAL PATHWAYS



**University of  
Sunderland**

**MASTER OF SCIENCE  
PROJECT MANAGEMENT**



**Teesside  
University**



**Teesside  
University**

**BACHELOR OF  
ENGINEERING (HONS)  
MECHANICAL**

**BACHELOR OF  
ENGINEERING (HONS)  
ELECTRONIC AND ELECTRICAL**

**BACHELOR OF ENGINEERING  
TECHNOLOGY (HONS)  
MECHANICAL (TOP-UP)**

**BACHELOR OF ENGINEERING  
TECHNOLOGY (HONS)  
ELECTRICAL AND ELECTRONIC (TOP-UP)**

**INTERNATIONAL  
FOUNDATION DIPLOMA IN  
ENGINEERING**

**INTERNATIONAL  
FOUNDATION DIPLOMA IN  
SCIENCE, TECHNOLOGY, ENGINEERING,  
MATHEMATICS AND ART**

# MASTER OF SCIENCE PROJECT MANAGEMENT

## PROGRAMME OBJECTIVES

The programme aims to broaden the knowledge and ability of graduates and practising engineers in relevant management skills, principles and procedures. The programme will focus on the methods, knowledge and techniques that allow these critical areas to be managed effectively.

The overall aims of the programme are:

- Develop and enhance the management skills and knowledge of students so they are able to manage effectively in a wide variety of environments;
- Enable students to make critical assessments regarding the applicability of management knowledge and techniques within a variety of project contexts; and
- Provide students with the skills and knowledge to make a significant contribution to project management research activities.

Modules		
<ul style="list-style-type: none"> <li>• Project Management and Control</li> <li>• Understanding Organisations and Systems</li> <li>• Leadership and Management of Project Risk, Quality and People</li> </ul>	<ul style="list-style-type: none"> <li>• Commercial and Contractual Issues</li> <li>• Project Delivery and International Project Management</li> <li>• Project / Dissertation</li> </ul>	
Course Fees		Duration
<b>Application Fees</b> <b>Local Student:</b>  S\$163.50	<b>Application Fees</b> <b>International Student:</b>  S\$490.50	<b>Full-Time:</b> 12 months   <b>Part-Time:</b> 18 months
<b>Tuition Fees</b> <b>Full-Time/Part-Time</b>  S\$20,165.00	<b>Tuition Fees</b> <b>Full-Time</b>  S\$25,397.00	<ul style="list-style-type: none"> <li>• All application fees are non-refundable.</li> <li>• All fees quoted are inclusive of GST.</li> <li>• The amount illustrated is based on 9% GST, effective 1 January 2024 and the total amount payable will be charged accordingly.</li> <li>• Local: Non-tuition fees for full-time programmes include MDIS membership entrance fee, membership subscription fee, MDIS experience workshop, academic writing workshop, medical insurance and fee protection scheme. Non-tuition fees for part-time programmes include MDIS membership entrance fee, membership subscription fees, MDIS experience workshop, academic writing workshop and fee protection scheme.</li> <li>• International: Non-tuition fees for full-time programmes include MDIS membership entrance fee, membership subscription fees, MDIS experience workshop, academic writing workshop, medical insurance, medical examination and administrative fee.</li> <li>• Non-tuition fees for international students may vary.</li> <li>• Non-tuition fees are not refundable. Please refer to MDIS refund policy on our corporate website for more details.</li> </ul>
<b>Non-Tuition Fees</b> <b>Full-Time/Part-Time</b>  S\$700.00 - S\$1,700.00	<b>Non-Tuition Fees</b> <b>Full-Time</b>  S\$1,290.00 - S\$2,800.00	
Entry Requirements		
<ul style="list-style-type: none"> <li>• At least a 2.2 degree in any subject OR</li> <li>• Mature candidates above 30 years old with 8 years of relevant work experience OR</li> <li>• Equivalent</li> </ul> <p><i>Note: All applications are subject to University approval.</i></p>		<ul style="list-style-type: none"> <li>• IELTS 6.0 overall with no component below 5.5 OR</li> <li>• At least a Grade C6 in English at GCE O-Level OR</li> <li>• MDIS Professional Certificate in English (PCIE) OR</li> <li>• Pass the MDIS English Placement Test OR</li> <li>• Letter from College / University clearly stating the Medium of Instruction of the highest qualification to be English OR</li> <li>• Equivalent</li> </ul>

### Minimum Number of Students to Commence Class

MDIS has the right to cancel a class/an intake if the minimum number of students enrolled is less than 10 for any programme per class. Students may enroll into a later intake, if any or withdraw from course. (For refund, please refer to our Refund Policy)

# BACHELOR OF ENGINEERING (HONS) ELECTRONIC AND ELECTRICAL

## PROGRAMME OBJECTIVES

The overall aims of the programme are to:

- Produce graduates with an enthusiasm for electrical and electronic engineering and an appreciation of its application in different contexts and involve them in an intellectually stimulating and satisfying experience of learning and studying;
- Produce graduates with knowledge on the importance of electrical and electronic engineering in an industrial, environmental, academic, economic and social context;
- Produce graduates with the ability to apply a variety of methods of study in the investigation and analysis of problems in electrical and electronic engineering;
- Produce graduates with the electrical and electronic engineering knowledge and skills required to critically evaluate information, assumptions, arguments and concepts for solving real engineering problems;
- Produce graduates with the qualities and skills for employability, enabling them to pursue further study and research programmes or to move directly into their chosen employment in industry and/or consulting/research organisation where they will manage their continuous professional development.

Modules		
<b>Year 1</b> <ul style="list-style-type: none"> <li>• Physics and Instrumentation</li> <li>• Engineering Mathematics</li> <li>• Electronic Principles</li> <li>• Electrical Principles</li> <li>• PLCs and Embedded Systems</li> <li>• Engineering Practice</li> </ul>	<b>Year 2</b> <ul style="list-style-type: none"> <li>• Industrial Communications</li> <li>• Multidisciplinary Software and Systems</li> <li>• Electrical Engineering</li> <li>• Integral Transforms and Matrices</li> <li>• Digital Electronics Design</li> <li>• Machines</li> </ul>	<b>Year 3</b> <ul style="list-style-type: none"> <li>• Electric Drives</li> <li>• Power Systems</li> <li>• Sustainable Systems and Industry 4.0</li> <li>• Industrial Electronics</li> <li>• Project</li> </ul>
Course Fees		Duration
<b>Application Fees Local Student:</b>  S\$163.50	<b>Application Fees International Student:</b>  S\$490.50	<b>Full-Time:</b> 36 months (Year 1 Entry)   24 months (Year 2 Entry)  <b>Part-Time:</b> 36 months (Year 1 Entry)   24 months (Year 2 Entry)
<b>Tuition Fees Full-Time/Part-Time</b>  <b>Year 1 - S\$39,240.00</b> <b>Year 2 - S\$25,615.00</b>	<b>Tuition Fees Full-Time</b>  <b>Year 1 - S\$43,055.00</b> <b>Year 2 - S\$28,340.00</b>	<ul style="list-style-type: none"> <li>• All application fees are non-refundable.</li> <li>• All fees quoted are inclusive of GST.</li> <li>• The amount illustrated is based on 9% GST, effective 1 January 2024 and the total amount payable will be charged accordingly.</li> <li>• Local: Non-tuition fees for full-time programmes include MDIS membership entrance fee, membership subscription fee, MDIS experience workshop, academic writing workshop, medical insurance and fee protection scheme. Non-tuition fees for part-time programmes include MDIS membership entrance fee, membership subscription fees, MDIS experience workshop, academic writing workshop and fee protection scheme.</li> <li>• International: Non-tuition fees for full-time programmes include MDIS membership entrance fee, membership subscription fees, MDIS experience workshop, academic writing workshop, medical insurance, medical examination and administrative fee.</li> <li>• Non-tuition fees for international students may vary.</li> <li>• Non-tuition fees are not refundable. Please refer to MDIS refund policy on our corporate website for more details.</li> </ul>
<b>Non-Tuition Fees Full-Time/Part-Time</b>  S\$700.00 - S\$1,900.00	<b>Non-Tuition Fees Full-Time</b>  S\$1,290.00 - S\$2,800.00	
Entry Requirements		English Language Requirements
<b>For Year 1 Entry</b> <ul style="list-style-type: none"> <li>• MDIS International Foundation Diploma in Engineering OR</li> <li>• At least two GCE A-Levels including grade C in Mathematics and an analytical science subject such as Biology, Chemistry, Computer Sciences, Physics or Technology OR</li> <li>• 12 years of formal education (with maths and physics background or another related Science/Technology/Engineering subject) OR</li> <li>• PEI qualifications in Engineering related fields, equivalent to pathway programmes with 10 years of formal education OR</li> <li>• International Foundation Diploma in Science, Technology, Engineering, Mathematics and Art</li> </ul> <b>For Year 2 Entry</b> <ul style="list-style-type: none"> <li>• Relevant Polytechnic Diplomas in Engineering related fields with a pass grade, equivalent to Year 1 OR</li> <li>• Relevant overseas Polytechnic Diplomas in Engineering related fields, equivalent to Year 1 with 10 years of formal education OR</li> <li>• Relevant PEI qualifications in Engineering related fields, equivalent to Year 1 with 12 years of formal education OR</li> <li>• Higher National Certificate (HNC) or Higher National Diploma (HND) in fields of Science/Technology/Engineering</li> </ul>		<ul style="list-style-type: none"> <li>• C6 in English at GCE O-Level OR</li> <li>• IELTS 5.5 for Level 4 / Year 1 entry OR</li> <li>• IELTS 6.0 for Level 5 / Year 2 entry OR</li> <li>• MDIS Professional Certificate in English (PCIE) OR</li> <li>• Pass MDIS English Placement test OR</li> <li>• Equivalent</li> </ul>

Minimum Number of Students to Commence Class

MDIS has the right to cancel a class/an intake if the minimum number of students enrolled is less than 10 for any programme per class. Students may enroll into a later intake, if any or withdraw from course. (For refund, please refer to our Refund Policy)

# BACHELOR OF ENGINEERING (HONS) MECHANICAL

## PROGRAMME OBJECTIVES

The overall aims of the programme are to:

- Produce graduates with an enthusiasm for mechanical engineering and an appreciation of its application in different contexts and involve them in an intellectually stimulating and satisfying experience of learning and studying;
- Produce graduates with the ability to apply their knowledge and understanding in order to be competitive and creative in the industry;
- Produce graduates with the ability to apply a variety of methods and skills in the investigation and solution of real mechanical engineering problems; and
- Produce graduates with the qualities and skills for employability, enabling them to either pursue further study programmes or to move directly into their chosen employment in industry and manage their continuous professional development.

Modules		
<b>Year 1</b> <ul style="list-style-type: none"> <li>• Engineering Mathematics</li> <li>• Electrical Principles</li> <li>• Materials &amp; Sustainability</li> <li>• Mechanical Engineering Practice</li> <li>• Structural Mechanics</li> <li>• Thermofluids</li> </ul>	<b>Year 2</b> <ul style="list-style-type: none"> <li>• Aeroengines &amp; Rocket Science</li> <li>• Applied Mathematical Methods</li> <li>• Group Design and Build Project</li> <li>• Manufacturing Processes</li> <li>• Mechanics of Materials 1</li> <li>• Product and Assembly Design Modelling</li> </ul>	<b>Year 3</b> <ul style="list-style-type: none"> <li>• Computer Aided Analysis</li> <li>• Dynamics and Vibration</li> <li>• Sustainable Systems and Industry 4.0</li> <li>• Mechanics of Materials 2</li> <li>• Project</li> </ul>
Course Fees		Duration
<b>Application Fees Local Student:</b>  S\$163.50	<b>Application Fees International Student:</b>  S\$490.50	<b>Full-Time:</b> 36 months (Year 1 Entry)   24 months (Year 2 Entry)  <b>Part-Time:</b> 36 months (Year 1 Entry)   24 months (Year 2 Entry)
<b>Tuition Fees Full-Time/Part-Time</b>  <b>Year 1 - S\$39,240.00</b> <b>Year 2 - S\$25,615.00</b>	<b>Tuition Fees Full-Time</b>  <b>Year 1 - S\$43,055.00</b> <b>Year 2 - S\$28,340.00</b>	<ul style="list-style-type: none"> <li>• All application fees are non-refundable.</li> <li>• All fees quoted are inclusive of GST.</li> <li>• The amount illustrated is based on 9% GST, effective 1 January 2024 and the total amount payable will be charged accordingly.</li> <li>• Local: Non-tuition fees for full-time programmes include MDIS membership entrance fee, membership subscription fee, MDIS experience workshop, academic writing workshop, medical insurance and fee protection scheme. Non-tuition fees for part-time programmes include MDIS membership entrance fee, membership subscription fees, MDIS experience workshop, academic writing workshop and fee protection scheme.</li> <li>• International: Non-tuition fees for full-time programmes include MDIS membership entrance fee, membership subscription fees, MDIS experience workshop, academic writing workshop, medical insurance, medical examination and administrative fee.</li> <li>• Non-tuition fees for international students may vary.</li> <li>• Non-tuition fees are not refundable. Please refer to MDIS refund policy on our corporate website for more details.</li> </ul>
<b>Non-Tuition Fees Full-Time/Part-Time</b>  S\$700.00 - S\$1,900.00	<b>Non-Tuition Fees Full-Time</b>  S\$1,290.00 - S\$2,800.00	
Entry Requirements		
<b>For Year 1 Entry</b> <ul style="list-style-type: none"> <li>• MDIS International Foundation Diploma in Engineering OR</li> <li>• At least two GCE A-Levels including grade C in Mathematics and an analytical science subject such as Biology, Chemistry, Computer Sciences, Physics or Technology OR</li> <li>• 12 years of formal education (with maths and physics background or another related Science/Technology/Engineering subject) OR</li> <li>• PEI qualifications in Engineering related fields, equivalent to pathway programmes with 10 years of formal education OR</li> <li>• International Foundation Diploma in Science, Technology, Engineering, Mathematics and Art</li> </ul> <b>For Year 2 Entry<sup>a</sup></b> <ul style="list-style-type: none"> <li>• Relevant Polytechnic Diplomas in Engineering related fields with a pass grade, equivalent to Year 1 OR</li> <li>• Relevant overseas Polytechnic Diplomas in Engineering related fields, equivalent to Year 1 with 10 years of formal education OR</li> <li>• Relevant PEI qualifications in Engineering related fields, equivalent to Year 1 with 12 years of formal education OR</li> <li>• Higher National Certificate (HNC) or Higher National Diploma (HND) in fields of Science/Technology/Engineering</li> </ul> <p><small><sup>a</sup>Direct entry into Year 2 will be processed at the discretion of the University</small></p>		<ul style="list-style-type: none"> <li>• C6 in English at GCE O-Level OR</li> <li>• IELTS 5.5 for Level 4 / Year 1 entry OR</li> <li>• IELTS 6.0 for Level 5 / Year 2 entry OR</li> <li>• MDIS Professional Certificate in English (PCIE) OR</li> <li>• Pass MDIS English Placement test OR</li> <li>• Equivalent</li> </ul>

### Minimum Number of Students to Commence Class

MDIS has the right to cancel a class/an intake if the minimum number of students enrolled is less than 10 for any programme per class. Students may enroll into a later intake, if any or withdraw from course. (For refund, please refer to our Refund Policy)



# BACHELOR OF ENGINEERING TECHNOLOGY (HONS) ELECTRICAL AND ELECTRONIC ENGINEERING (TOP-UP)

## PROGRAMME OBJECTIVES

The overall aims of the programme are to:

- Produce graduates who possess a rounded knowledge and understanding of electrical and electronic engineering and the skills to analyse complex problems appropriate to the discipline;
- Produce graduates with an enthusiasm for electrical and electronic engineering, along with an appreciation of its application in different contexts and involve them in an intellectually stimulating and satisfying experience of learning and studying;
- Produce graduates with the ability to apply their knowledge and understanding to be competitive and creative;
- Produce graduates with the ability to apply a variety of methods and skills in the investigation and solution of real electrical and electronic engineering problems; and
- Produce graduates with the qualities and skills for employability, enabling them to either pursue programmes of further study or to move directly into their chosen employment in industry and manage their own continuous professional development.

Modules		
<ul style="list-style-type: none"> <li>• Group Design</li> <li>• Power Electronics and Drive Systems</li> <li>• Electronic Systems</li> </ul>		<ul style="list-style-type: none"> <li>• Power Systems</li> <li>• Project (BEng Tech)</li> </ul>
Course Fees		Duration
<b>Application Fees Local Student:</b>  S\$163.50	<b>Application Fees International Student:</b>  S\$490.50	<b>Full-Time:</b> 12 months   <b>Part-Time:</b> 12 months
<b>Tuition Fees Part-Time</b>  S\$13,625.00	<b>Tuition Fees Part-Time</b>  S\$16,350.00	<ul style="list-style-type: none"> <li>• All application fees are non-refundable.</li> <li>• All fees quoted are inclusive of GST.</li> <li>• The amount illustrated is based on 9% GST, effective 1 January 2024 and the total amount payable will be charged accordingly.</li> <li>• Local: Non-tuition fees for full-time programmes include MDIS membership entrance fee, membership subscription fee, MDIS experience workshop, academic writing workshop, medical insurance and fee protection scheme. Non-tuition fees for part-time programmes include MDIS membership entrance fee, membership subscription fees, MDIS experience workshop, academic writing workshop and fee protection scheme.</li> <li>• International: Non-tuition fees for full-time programmes include MDIS membership entrance fee, membership subscription fees, MDIS experience workshop, academic writing workshop, medical insurance, medical examination and administrative fee.</li> <li>• Non-tuition fees for international students may vary.</li> <li>• Non-tuition fees are not refundable. Please refer to MDIS refund policy on our corporate website for more details.</li> </ul>
<b>Non-Tuition Fees Part-Time</b>  S\$700.00 - S\$1,900.00	<b>Non-Tuition Fees Part-Time</b>  S\$1,290.00 - S\$2,800.00	
Entry Requirements		
<ul style="list-style-type: none"> <li>• Relevant Polytechnic Diplomas in Electrical Engineering related fields with a good pass (55% and above), equivalent to Year 1 and Year 2 OR</li> <li>• Relevant overseas Polytechnic Diplomas in Electrical Engineering related fields with a good pass (55% and above), equivalent to Year 1 and Year 2 with 10 years of formal education OR</li> <li>• Relevant PEI qualifications in Electrical Engineering related fields with a good pass (55% and above), equivalent to Year 1 and Year 2 with 12 years of formal education OR</li> <li>• Higher National Diploma (HND) in fields of Electrical Engineering OR</li> <li>• Mature candidates above 30 years old with 8 years of relevant work experience</li> </ul> <p><i>Note: All applications are subject to the University's approval.</i></p>		The applicant is required to achieve one of the following: <ul style="list-style-type: none"> <li>• C6 in English at GCE O-Level OR</li> <li>• IELTS 6.0 (with no element lower than 5.5) OR</li> <li>• MDIS Professional Certificate in English (PCIE) OR</li> <li>• Pass MDIS English Placement test OR</li> <li>• Equivalent</li> </ul>

### Minimum Number of Students to Commence Class

MDIS has the right to cancel a class/an intake if the minimum number of students enrolled is less than 10 for any programme per class. Students may enroll into a later intake, if any or withdraw from course. (For refund, please refer to our Refund Policy)

# BACHELOR OF ENGINEERING TECHNOLOGY (HONS) MECHANICAL ENGINEERING (TOP-UP)

## PROGRAMME OBJECTIVES

The overall aims of the programme are to:

- Produce graduates with an enthusiasm for mechanical engineering, an appreciation of its application in different contexts and involve them in an intellectually stimulating and satisfying experience of learning and studying;
- Produce graduates with the ability to apply their knowledge and understanding to be competitive and creative;
- Produce graduates with the ability to apply a variety of methods and skills in the investigation and solution of real mechanical engineering problems; and
- Produce graduates with the qualities and skills for employability, enabling them to either pursue programmes of further study or to move directly into their chosen employment in industry and manage their own continuous professional development.

Modules	
<ul style="list-style-type: none"> <li>• Group Design</li> <li>• Computer Aided Analysis (BEng Tech)</li> <li>• Product Quality and Reliability</li> </ul>	<ul style="list-style-type: none"> <li>• Applied Mechanics of Materials</li> <li>• Project (BEng Tech)</li> </ul>
Course Fees	Duration
<b>Application Fees</b> <b>Local Student:</b>  S\$163.50	<b>Full-Time: 12 months   Part-Time: 12 months</b>
<b>Tuition Fees</b> <b>Full-Time/Part-Time</b>  S\$13,625.00	<ul style="list-style-type: none"> <li>• All application fees are non-refundable.</li> <li>• All fees quoted are inclusive of GST.</li> <li>• The amount illustrated is based on 9% GST, effective 1 January 2024 and the total amount payable will be charged accordingly.</li> <li>• Local: Non-tuition fees for full-time programmes include MDIS membership entrance fee, membership subscription fee, MDIS experience workshop, academic writing workshop, medical insurance and fee protection scheme. Non-tuition fees for part-time programmes include MDIS membership entrance fee, membership subscription fees, MDIS experience workshop, academic writing workshop and fee protection scheme.</li> <li>• International: Non-tuition fees for full-time programmes include MDIS membership entrance fee, membership subscription fees, MDIS experience workshop, academic writing workshop, medical insurance, medical examination and administrative fee.</li> <li>• Non-tuition fees for international students may vary.</li> <li>• Non-tuition fees are not refundable. Please refer to MDIS refund policy on our corporate website for more details.</li> </ul>
<b>Non-Tuition Fees</b> <b>Full-Time/Part-Time</b>  S\$700.00 - S\$1,900.00	
Entry Requirements	English Language Requirements
<ul style="list-style-type: none"> <li>• Relevant Polytechnic Diplomas in Mechanical Engineering related fields with a good pass (55% and above), equivalent to Year 1 and Year 2 OR</li> <li>• Relevant overseas Polytechnic Diplomas in Mechanical Engineering related fields with a good pass (55% and above), equivalent to Year 1 and Year 2 with 10 years of formal education OR</li> <li>• Relevant PEI qualifications in Mechanical Engineering related fields with a good pass (55% and above), equivalent to Year 1 and Year 2 with 12 years of formal education OR</li> <li>• Higher National Diploma (HND) in fields of Mechanical Engineering OR</li> <li>• Mature candidates above 30 years old with 8 years of relevant work experience</li> </ul> <p><i>Note: All applications are subject to the University's approval.</i></p>	<ul style="list-style-type: none"> <li>• C6 in English at GCE O-Level OR</li> <li>• IELTS 6.0 (with no element lower than 5.5) OR</li> <li>• MDIS Professional Certificate in English (PCIE) OR</li> <li>• Pass MDIS English Placement test OR</li> <li>• Equivalent</li> </ul>

*Minimum Number of Students to Commence Class*

*MDIS has the right to cancel a class/an intake if the minimum number of students enrolled is less than 10 for any programme per class. Students may enroll into a later intake, if any or withdraw from course. (For refund, please refer to our Refund Policy)*

# INTERNATIONAL FOUNDATION DIPLOMA IN ENGINEERING

## PROGRAMME OBJECTIVES

This programme provides an avenue for participants who want to formalise their experiences and understanding of Engineering. It also reinforces participants' foundation in mathematics and physics and enhances their problem-solving skills and techniques through lectures and tutorials.

Modules		
<ul style="list-style-type: none"> <li>Engineering Mathematics 1</li> <li>Programming Principles and Development</li> <li>Physics – Mechanics</li> </ul>		<ul style="list-style-type: none"> <li>Engineering Mathematics 2</li> <li>Computing Systems</li> <li>Physics – Dynamics</li> </ul>
Course Fees		Duration
<b>Application Fees Local Student:</b>  S\$109.00	<b>Application Fees International Student:</b>  S\$490.50	<b>Full-Time: 7 months   Part-Time: 12 months</b>
<b>Tuition Fees Full-Time/Part-Time</b>  S\$9,047.00	<b>Tuition Fees Full-Time</b>  S\$9,810.00	<ul style="list-style-type: none"> <li>All application fees are non-refundable.</li> <li>All fees quoted are inclusive of GST.</li> <li>The amount illustrated is based on 9% GST, effective 1 January 2024 and the total amount payable will be charged accordingly.</li> <li>Local: Non-tuition fees for full-time programmes include MDIS membership entrance fee, membership subscription fee, MDIS experience workshop, academic writing workshop, medical insurance and fee protection scheme. Non-tuition fees for part-time programmes include MDIS membership entrance fee, membership subscription fees, MDIS experience workshop, academic writing workshop and fee protection scheme.</li> <li>International: Non-tuition fees for full-time programmes include MDIS membership entrance fee, membership subscription fees, MDIS experience workshop, academic writing workshop, medical insurance, medical examination and administrative fee.</li> <li>Non-tuition fees for international students may vary.</li> <li>Non-tuition fees are not refundable. Please refer to MDIS refund policy on our corporate website for more details.</li> </ul>
<b>Non-Tuition Fees Full-Time/Part-Time</b>  S\$200.00 - S\$450.00	<b>Non-Tuition Fees Full-Time</b>  S\$810.00 - S\$1000.00	
Entry Requirements		English Language Requirements
Applicants must be of age 16 and above and meet at least one of the following requirements: <ul style="list-style-type: none"> <li>At least 1 GCE O-Level Pass OR</li> <li>NITEC/Higher NITEC qualifications OR</li> <li>International applicants must have completed 10 years of formal education OR</li> <li>Mature candidates above 30 years old with 8 years of relevant work experience OR</li> <li>At least 1 IGCSE Level Pass</li> </ul>		<ul style="list-style-type: none"> <li>All applicants must possess a D7 in English at GCE O-Levels or equivalent OR</li> <li>Achieve a minimum band of 5.5 in IELTS or equivalent OR</li> <li>A pass in the MDIS English Entrance Test (EET) OR</li> <li>MDIS Professional Certificate in English (PCIE) OR</li> <li>1 IGCSE Level Pass (Either English 1<sup>st</sup> or 2<sup>nd</sup> Language)</li> <li>Online English Placement Test conducted by MDIS OR</li> <li>Achieve a minimum score of 95 and above in Duolingo English Test</li> </ul>

### Minimum Number of Students to Commence Class

MDIS has the right to cancel a class/an intake if the minimum number of students enrolled is less than 10 for any programme per class. Students may enroll into a later intake, if any or withdraw from course. (For refund, please refer to our Refund Policy)

# INTERNATIONAL FOUNDATION DIPLOMA IN SCIENCE, TECHNOLOGY, ENGINEERING, MATHEMATICS AND ART

## PROGRAMME OBJECTIVES

International Foundation Diploma (IFD) in Science, Technology, Engineering, Mathematics and Art aims to prepare students for transition into degree-level study, by equipping them with the fundamental skills and knowledge needed to be successful in the International Foundation Diploma's subjects. This programme creates an alternative progression route into globally recognised External Degree Programmes (EDPs) across MDIS, allowing entry to students who do not hold the qualifications to satisfy the usual entry requirements.

On successful completion of the course, the students will be able to:

- Understand the strategies and techniques to support continued undergraduate study [Knowledge]
- Demonstrate knowledge and understanding of concepts and applications in subject areas relevant to their intended progression route [Intellectual Skills]
- Apply subject specific knowledge and theory to tackle simulated problems and case studies in areas of relevance to their chosen degree programme [Intellectual Skills]
- Search, disseminate and acknowledge a variety of sources of information [Practical Skills]
- Carry out practical work accurately, precisely and in accordance with health and safety procedures [Practical Skills]
- Communicate effectively in oral and writing for different audiences [Generic Skills]

Modules		
<ul style="list-style-type: none"> <li>• Academic &amp; Research Writing Skills</li> <li>• Effective Communication and Presentation Skills</li> <li>• Capstone Project</li> </ul>		<ul style="list-style-type: none"> <li>• Mathematics</li> <li>• Engineering Science</li> </ul>
Course Fees		Duration
<b>Application Fees Local Student:</b>  S\$109.00	<b>Application Fees International Student:</b>  S\$490.50	<b>Full-Time:</b> 6 months   <b>Part-Time:</b> 8 months
<b>Tuition Fees Full-Time/Part-Time</b>  S\$4,251.00	<b>Tuition Fees Full-Time</b>  S\$6,049.50	<ul style="list-style-type: none"> <li>• All application fees are non-refundable.</li> <li>• All fees quoted are inclusive of GST.</li> <li>• The amount illustrated is based on 9% GST, effective 1 January 2024 and the total amount payable will be charged accordingly.</li> <li>• Local: Non-tuition fees for full-time programmes include MDIS membership entrance fee, membership subscription fee, MDIS experience workshop, academic writing workshop, medical insurance and fee protection scheme. Non-tuition fees for part-time programmes include MDIS membership entrance fee, membership subscription fees, MDIS experience workshop, academic writing workshop and fee protection scheme.</li> <li>• International: Non-tuition fees for full-time programmes include MDIS membership entrance fee, membership subscription fees, MDIS experience workshop, academic writing workshop, medical insurance, medical examination and administrative fee.</li> <li>• Non-tuition fees for international students may vary.</li> <li>• Non-tuition fees are not refundable. Please refer to MDIS refund policy on our corporate website for more details.</li> </ul>
<b>Non-Tuition Fees Full-Time/Part-Time</b>  S\$200.00 - S\$450.00	<b>Non-Tuition Fees Full-Time</b>  S\$810.00 - S\$1,000.00	
Entry Requirements		
<ul style="list-style-type: none"> <li>• At least 1 GCE O-Level Pass* OR</li> <li>• At least 1 IGCSE Level Pass* OR</li> <li>• Higher NITEC or NITEC qualifications OR</li> <li>• International applicants must have completed 10 years of formal education OR</li> <li>• Mature candidates above 30 years old with 8 years of relevant work experience</li> </ul> <p><i>* English language subject is not applicable</i></p>		<ul style="list-style-type: none"> <li>• All applicants must possess a D7 in English at GCE O-Levels or equivalent OR</li> <li>• Achieve a minimum band of 5.5 in IELTS or equivalent OR</li> <li>• Pass the English Entrance Test conducted by MDIS OR</li> <li>• MDIS Professional Certificate in English OR</li> <li>• 1 IGCSE Level Pass (either English 1<sup>st</sup> or 2<sup>nd</sup> language) OR</li> <li>• Online English Placement Test conducted by MDIS OR</li> <li>• Letter from College/University clearly stating the Medium of Instruction of the highest qualification to be English OR</li> <li>• Achieve a minimum score of 95 and above in Duolingo English Test</li> </ul>

### Minimum Number of Students to Commence Class

MDIS has the right to cancel a class/an intake if the minimum number of students enrolled is less than 10 for any programme per class. Students may enroll into a later intake, if any or withdraw from course. (For refund, please refer to our Refund Policy)



**MDIS**  
Management Development  
Institute of Singapore



Founded in 1956, the Management Development Institute of Singapore (MDIS) is one of Singapore's oldest not-for-profit professional institutes for lifelong learning. MDIS has two main subsidiaries: Management Development Institute of Singapore Pte Ltd which oversees its Singapore academic operations and MDIS International Pte Ltd which focuses on MDIS' globalisation strategy.

MDIS offers internationally-accredited courses in Business and Management, Engineering, Fashion and Design, Health and Nursing, Information Technology, Languages and Education, Life Sciences, Media and Communications, Psychology, Tourism and Hospitality Management and Safety and Environmental Management. These programmes are offered in collaboration with renowned universities in the United Kingdom and the United States of America. MDIS also has set a proven track record of preparing students to excel in the Singapore-Cambridge General Certificate of Education (Ordinary and Advanced Level), Cambridge International General Certificate of Secondary Education (IGCSE) and Cambridge International Lower Secondary, through its comprehensive preparatory courses.

MDIS is EduTrust certified, attesting to its exemplary education and business excellence standards. The institute was first awarded the certification in 2010 – subsequently renewed it for four years in 2014, 2018 and 2023. MDIS was also one of the first Private Education Institutions (PEIs) to be registered under the Enhanced Registration Framework.

Equally vested in corporate-level training, MDIS' corporate training arm, the Management Development and Consultancy, was set up in 1995 to cater to the training needs of the workforce. In 2014, MDIS acquired the Service Quality Centre to diversify its offerings in training solutions – in its endeavour to be a premium provider of training solutions in the region.

Apart from the main Singapore campus, MDIS has international campuses in Tashkent, Uzbekistan, Johor, Malaysia, as well as Dushanbe, Tajikistan. MDIS also has representative offices in India and Indonesia, as well as agents throughout Southeast Asia.



Scan for more course details  
and information

## MDIS STUDENT'S EXPERIENCE



**Shanmugam  
Venkatesh Prashanth**

MDIS Alumni  
Class of 2016



At MDIS, we have a holistic learning environment surrounded by well-equipped facilities. We were not pushed to work merely to produce results but given the flexibility to work independently. This leads to innovative propositions in many of our projects.



